


media-tech

BT SEEKER

MT5512



User Manual

Introduction

Thank you for buying MT5512 BT Seeker. Device requires to be paired with smartfone supporting Bluetooth 4.0 interface and also you need to install free application available in GooglePlay store for Android platform and AppStore for iOS platform. Please scan appropriate QRcode given below to install application.

Android



iOS



First steps

Battery installation

Rotate battery cover as shown below, out inside CR2032 battery, put back cover and rotate it back to lock it.



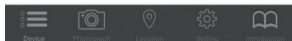
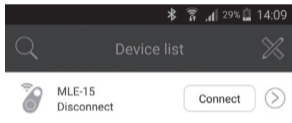
Power on/off

Press and hold for ca. 3 seconds, until you hear double sound to power on the device.

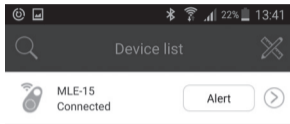
Press and hold for ca.3 seconds, until you hear single sound to power off the device.

Using the device

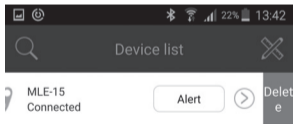
Run application, power on BT Seeker device, next click "magnifier" icon in order to search for supported devices. Please click „connect" on the list for selected device.



When connection is active status will show "connected".



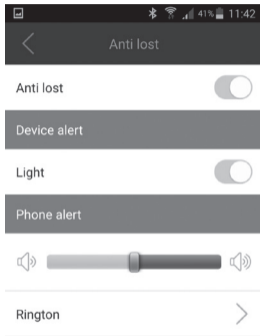
In order to delete item on the list swipe item in the left, option „delete" will pop-up.



Click arrow icon on the right to show more options regarding selected device, you can add picture and edit device name, for i.e. add car keys picture.



“Anti-lost” options



“Anti-lost” options define how device behave when BT Seeker is out of smartphone reach. “Find me” options define how it works when

you use BT Seeker to manually call-in the smartphone

“Device alert light” – on/off led on the BT Seeker.

“Phone alert” – select your ringtone and volume level when alert is triggered.

Note! *BT Seeker can trigger alert on the smartphone when Bluetooth connection is lost. You can also use smartphone to manually call-in BT seeker, and use BT Seeker to call-in smartphone as well.*

Application general settings

„Do Not Disturb” – enable silent mode.

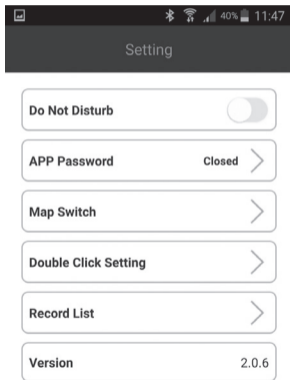
„APP Password” – you can secure application by password.

„Map Switch” – you can use “Google maps” or “Baidu maps” to show location

„Double Click Setting” – „Setting for alarm” double clicking the button will call-in the

smartphone; „setting for voice recording” will start voice recording in the smartphone.

„Record List” – voice recording list.



„Location” function



„Lost History” – show smartphone location when BT Seeker lost connection.

„Locate List” – show smartphone location when user pressed button on the BT Seeker.

„Photograph” function

Function open camera module in your smartphone, button works then as remote shutter release.



Auto Flash



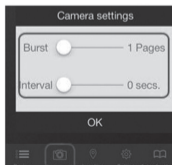
Flashlight on



Flashlight off



switch the front and rear camera



Principle of operation

BT Seeker must be connected to smartphone (status „connected“), then whenever BT Seeker is out of smartphone reach (ca. more than 25 meters) it will trigger alert in the smartphone automatically. You will see flashing red item on the list and alert sound will be played.



To trigger off the alert please click item on the list. If BT Seeker will be again in the smartphone reach and do not reconnect automatically please manually click „connect“ – otherwise alert will be triggered again.

If you want to manually call-in the BT Seeker click "Alert", if you want to stop it click "Stop alert". If you want to manually call-in the smartphone please double click button on the BT Seeker (make sure that option "double click" is set on "alarm setting").

Due to continuous development specification and appearance of product are subject to change without prior notice. For technical support please visit www.media-tech.eu.